

Improving functional recovery by combining Individual Placement and Support (IPS) and Motivational Interviewing-based Adherence Therapy (AT) in patients with early psychosis



Dorothea Jäckel
Andreas Bechdorf
Karolina Leopold

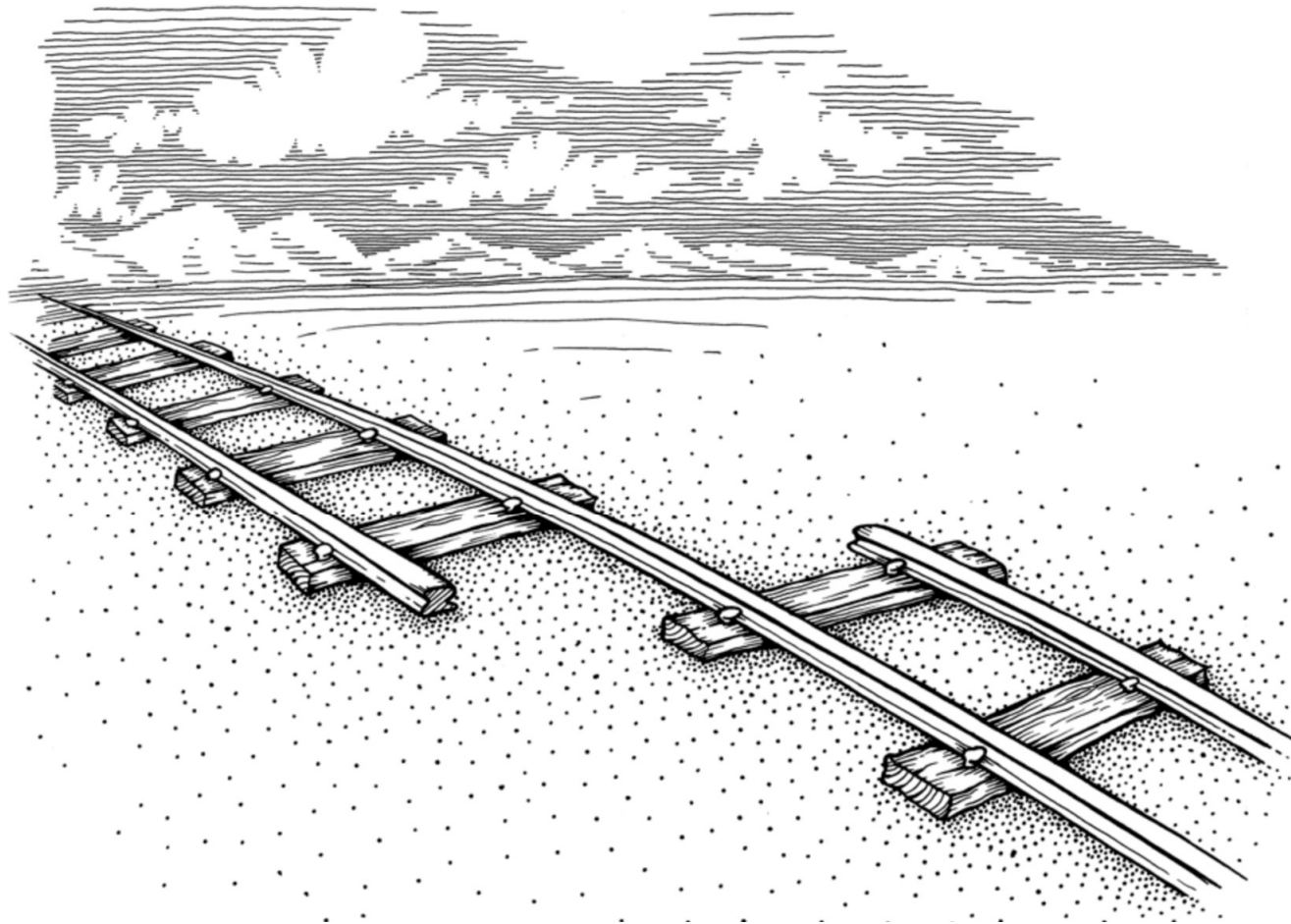
IEPA 14, Lausanne

10. July 2023

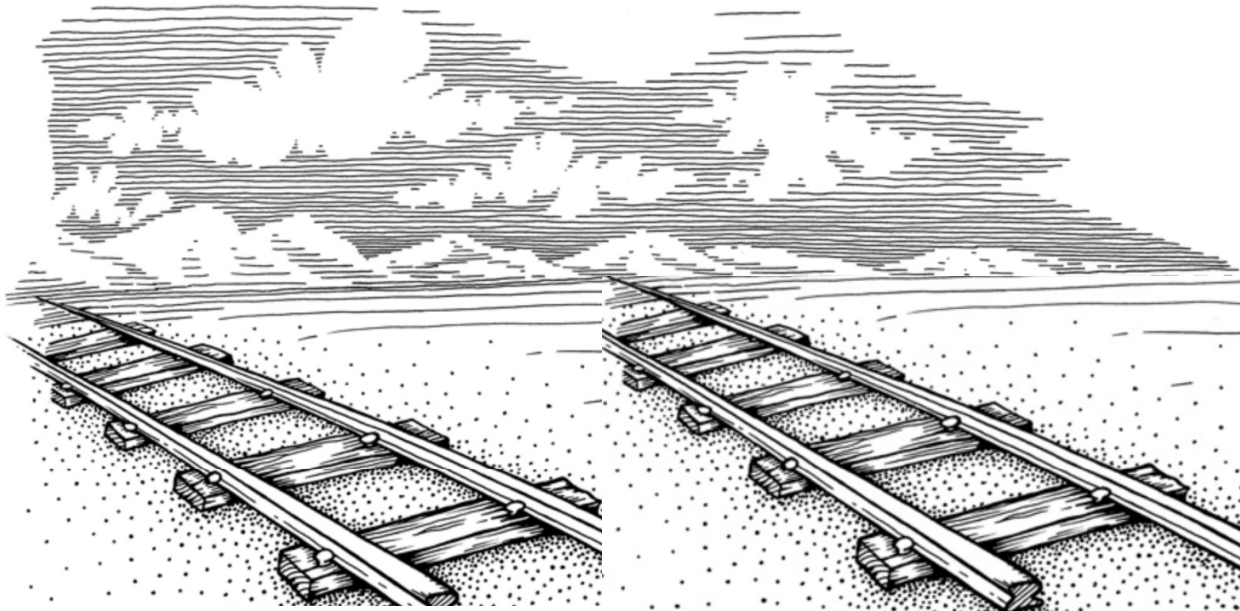
Developmental tasks in the transition to adulthood

- Completing school and vocational training/higher education
- Becoming independent
- Finding one's own position/role in society

(Lost in) Transition from school to vocational training for youth with mental health issues (SMI, CMD)



Linkage between vocational training and mental health system



Supported Education: Cooperation between vocational training and the mental health system for the youth

Local education authority
34 schools for vocational training

 Handwerkskammer
Berlin




Berlin Chamber of Crafts
(HWK)
> 30.000 companies

soulspace
für junge Menschen
in Krisen

**Mental health
service**




 IHK
Chamber of Commerce and
Industry of Berlin (IHK Berlin),
> 83.000 companies



Principals of Individual Placement and Support (IPS)



Competitive employment,
education and training (EET)



Systematic job / career
development



Rapid job search,
enrollment in / continue
training



Integrated mental health
services



Zero exclusion



Time-unlimited supports



Benefits planning



Worker / trainee
preferences

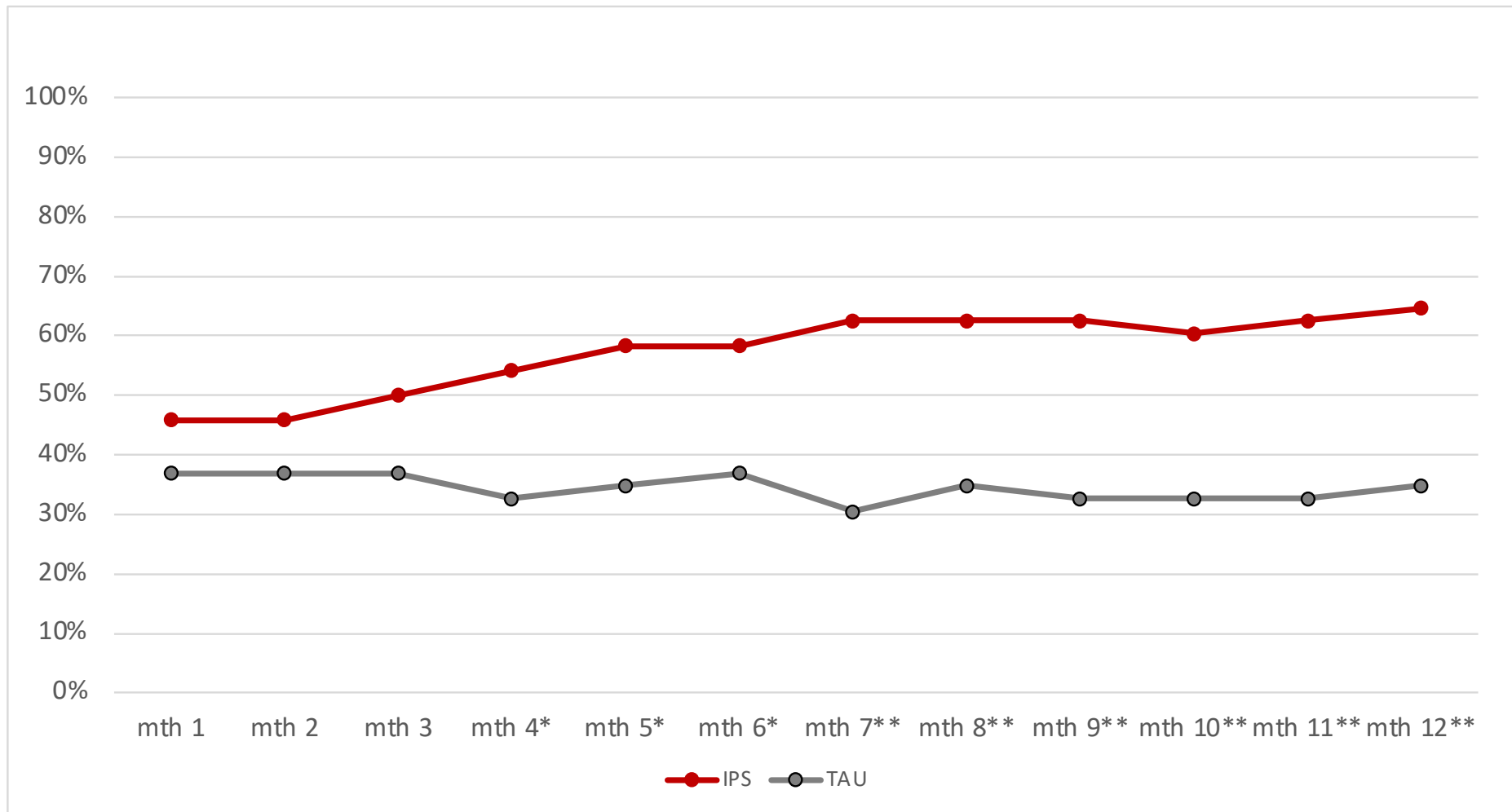


SEd: Involve relevant
others (family, friends)

IPS-AT Study 2017-2022: Sample description at baseline (n = 94)

	IPS (n = 48)	TAU (n = 46)	<i>p</i>
Age years, M (SD)	27,3 (5,2)	25,4 (4,6)	n.s.
Gender (m)	21 (44 %)	28 (61 %)	n.s.
No partnership	40 (83 %)	37 (78 %)	n.s.
Diagnosis ICD-10			n.s.
F1x.5	13 (27 %)	10 (22 %)	
F2x	28 (58 %)	32 (69 %)	
F3x	7 (15 %)	4 (9 %)	
Substance misuse	34 (71 %)	36 (78 %)	n.s.
Hospital admissions M (SD)	2 (2,1)	2,4 (3,1)	n.s.
GAF M (SD)	67,1 (13,5)	66,2 (12,2)	n.s.
Migration	19 (40 %)	22 (48 %)	n.s.
School finished	47 (98 %)	1 (98 %)	n.s.
Training or higher education with degree	27 (56 %)	21 (46 %)	n.s.
Withdrawal from training or higher education	15 (31 %)	19 (41 %)	n.s.
Not in employment, education or training (NEET)	26 (54 %)	29 (63 %)	n.s.

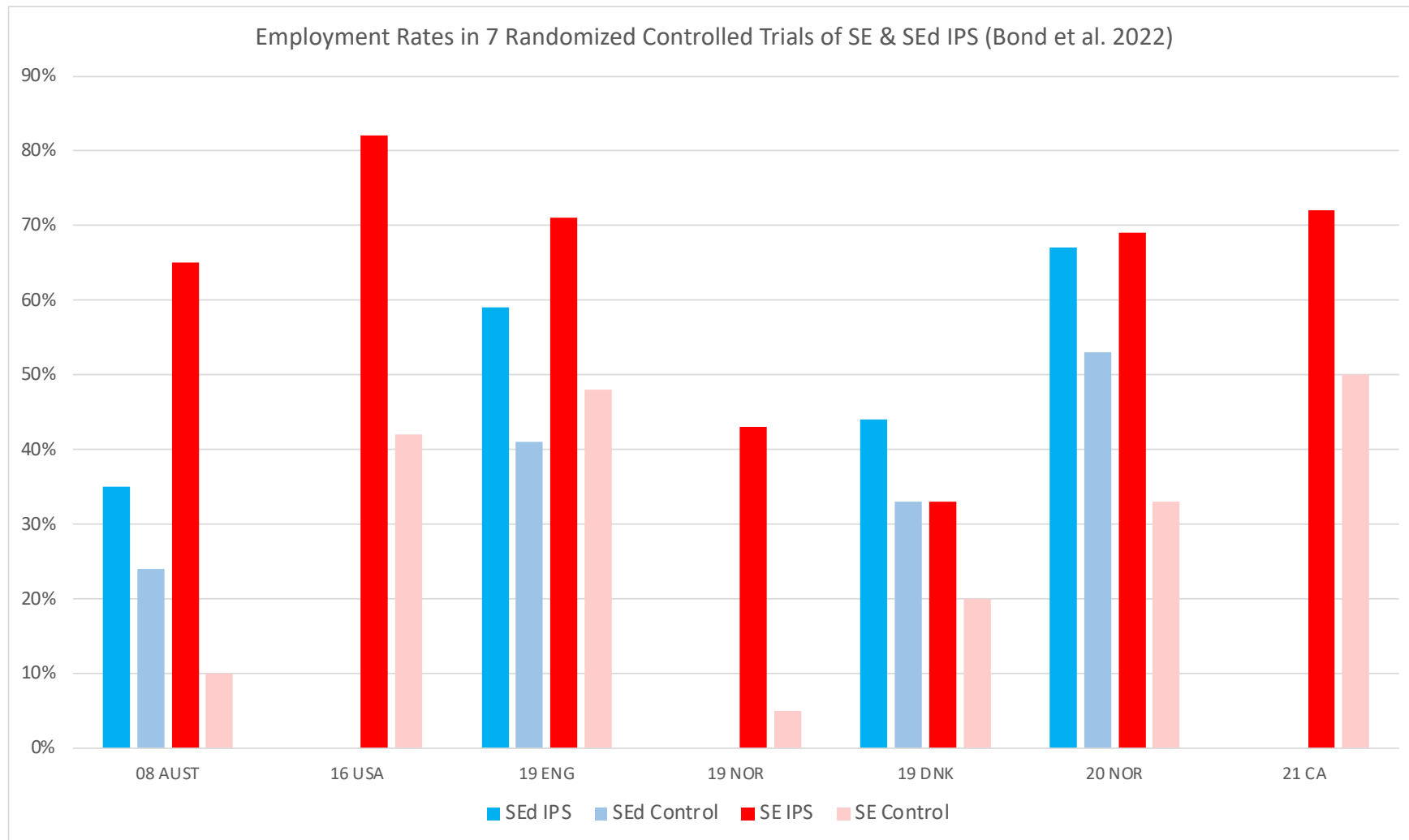
IPS-AT Outcomes: Employment, Education, Training (n=94)



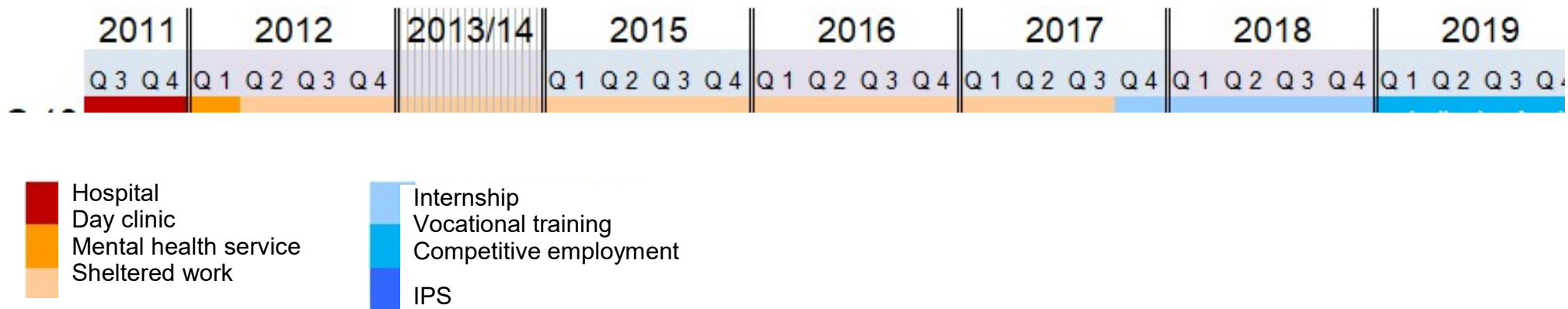
IPS-AT Results 12 months follow-up: Employment, Education and Training (EET)

	IPS (n = 48)	TAU (n = 46)	<i>p</i>
At least one day in EET	36 (75 %)	26 (57 %)	.06
Steady EET (50% follow-up, at least 6 mths)	30 (63 %)	16 (35 %)	< .01
Months in EET, M (SD)	6,8 (5,1)	4,1 (4,9)	< .02
Hours per week in EET, M (SD)	24,2 (16,5)	17,4 (16,3)	< .05
Earnings in €, M (SD)	9.201 (13.358)	4.711 (7.533)	< .05

Employment and education rates in 7 RCT



Longterm support in SEd (early childhood teacher)



Conclusion

- IPS Practice IPS for young adults with severe mental illness can be implemented in mental health care at a psychiatric hospital in Germany
- IPS Practice: More time is needed for Supported Education in order to complete vocational training
- Study limitation: 12-month follow-up period is short for (higher) education and vocational training; no appropriate representation of graduation and degrees
- Study: Outcomes employment, education or training (EET) are in line with results of international RCTs



**Thank you for your
attention**

dorothea.jaeckel@vivantes.de

IPS-AT Outcomes: Employment, Education, Training (n=94)

